

Performance Comparison of PI and Fuzzy Logic Based IPFC on Damping of Power System Oscillations

S. N. Dhurvey, V. K. Chandrakar

Dept. of Electrical Engg, G.H. Rasoni College of Engineering, Nagpur, India
Email: sonal.nd2014@gmail.com, vinod.chandrakar@raisoni.net

Received 24 December 2015; accepted 26 April 2016; published 29 April 2016

Copyright © 2016 by authors and Scientific Research Publishing Inc.

This work is licensed under the Creative Commons Attribution International License (CC BY).

<http://creativecommons.org/licenses/by/4.0/>



Open Access

Abstract

This paper presents a new approach for determining the effective control signals for damping of oscillations by using fuzzy logic based Interline Power Flow Controller [IPFC]. The IPFC performance is tested with PI controllers in comparison with fuzzy logic based controller on Modified Phillips-Heffron Model of Single Machine Infinite Bus System to achieve improved damping performance by selecting effective control signals such as deviation in pulse width modulation index of voltage series converter 1 in line 1, pulse width modulation index of voltage series converter 2 in line 2, deviation in phase angle of the injected voltage of convertor 1, injected voltage phase angle deviation of convertor 2. Investigations reveal that coordinated tuning of Interline Power Flow Controller with Fuzzy Logic provides the robust dynamic performance. The Fuzzy Logic Based Interline Power Flow Controller [IPFC] is designed with simple fuzzy rules to coordinate the additional damping signal. The proposed controllers for IPFC are able to achieve improved designed performance of the power system. Validity of effective control signals has been done by eigen value analysis.

Keywords

FACTS, IPFC, FLC, Damping of Oscillations

1. Introduction

When a power system is subjected to a disturbance, the system variables undergo oscillations. Some low frequency electromechanical oscillations of small magnitude exist in the power system for long periods of time, and in some cases they may impose limitations on the transmission line functionality. With low damping, power

system is subjected to prolonged large oscillations. Several devices and control methods have been developed to increase damping in power systems and improve power transfer limits. In particular, the application of multi-functional FACTS controllers based on back to back dc/ac voltage source converter has greatly met with power demand in the recent years. The high current semiconductor device based FACTS devices with proper control strategy can improve the power system stability of power system. Many researcher presented work on various nonlinear VSC based FACTS devices like STATCOM, SSSC [1] and UPFC for transient stability improvement of the power system under various system conditions. Amongst the other developed VSC based nonlinear FACTS devices, Interline Power Flow Controller (IPFC) is most versatile FACTS device, it consists of number of SSSC which are connected in each line which are connected via common dc bus, addresses the problem of compensating a number of transmission lines. The special feature of IPFC is not only to perform an independently controllable reactive series compensation of each individual line but also to deliver real power between the compensated lines. This capability of IPFC makes it possible to equalize both real and reactive power flow between the lines; hence avoid the burden of overloaded; making compensation for resistive line voltage drops and the associated reactive power demand and increasing the efficacy of the overall compensating system for dynamic disturbances [2]-[19]. Shan Jiang *et al.* [18] discuss the behavior of two FACTS devices; the combined series-series controller and the combined series-shunt controller in a benchmark system and prove that the IPFC has more series branches than the UPFC, it provides more opportunities for network segmentation and, hence, has the potential for greater damping improvement. Gopinath *et al.* [19] introduce the model of state estimation embedded with IPFC. A power injection model that shows the influence of IPFC on the power flow between the interconnected lines is presented. Segundo *et al.* [16] have examined the efficacy of VSC-based FACTS controllers in contributing to system-wide damping. The strategy is tested on a practical 45-machine Mexican system that includes number of static VAR compensators.

Fuzzy Logic Controller is robust and easily modified. It can use multiple input and output sources. Advantageous feature of fuzzy logic is to provide solution to the problem can be cast in terms that human operators can apply their experiences for the design of the controller to achieve maximum performance of the IPFC controller.

Dhurvey *et al.* [20] have examined the relative effectiveness of IPFC control signals on linearized power system model of single machine infinite bus system (SMIB) system for analyzing performance comparison of IPFC in coordination with Power Oscillation Damping Controller [POD] and Power System Stabilizer [PSS]. However, results have been not presented with the consideration of various damping factor D and K_p and K_i is not properly tuned. Hence, the aim of this paper is to present the modified version of reference [20]. Kazemi *et al.* [10] proved the effective damping control function of an IPFC installed in a power system. Parimi, *et al.* [5] implement the Fuzzy logic control for IPFC for damping low frequency oscillations. Alivelu M. Parimi [7] develop the nonlinear model of power system incorporated with Interline Power Flow Controller (IPFC). The oscillation modes with low damping ratio are obtained from the eigen value analysis of the linearized Phillips-Heffron model Parimi [12] has proved that IPFC control signal m_2 is the most effective. M.R. Banaei *et al.* [14] has proved that signals m_1 , m_2 based controllers have more effect on damping of oscillation and signal δ_1 , δ_2 based controllers have less effect on damping of oscillation. Veeramalla, J. *et al.* [15] investigated the effectiveness of the IPFC based damping controller. Dynamic simulations results have emphasized that the damping controller which modulates the control signal m_2 provides satisfactory dynamic performance under wide variations in loading condition and system parameters. However, they have not presented an approach for obtaining the simultaneous coordination of IPFC with each control signal and Fuzzy Logic Controller.

In view of the available work presented by the researchers, the main objective of this paper is to study effectiveness of various control signals $[m_{i1}, m_{i2}, \alpha_1, \alpha_2]$ of IPFC for damping of power system oscillations. The comparative performance of PI based controller and fuzzy logic based IPFC for improved power system performance is demonstrated. The results are validated in MATLAB environment.

2. System Model

Single-Machine Infinite Bus Power System incorporated with Interline Power Flow Controller in one of the two transmission lines is considered for analysis which consists of an excitation transformer, a boosting transformer, a pair of voltage source converters and a DC link capacitor is shown in **Figure 1**. Δm_{i1} is the deviation in pulse width modulation index m_{i1} of voltage series converter 1 in line 1. By controlling m_{i1} , the magnitude of series

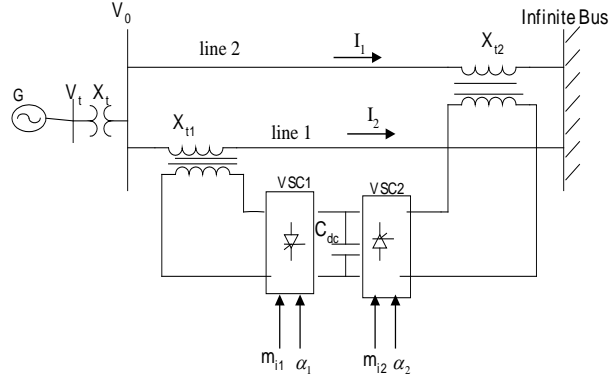


Figure 1. A single machine infinite bus power system installed with an IPFC in one of the lines.

injected voltage in line 1 can be controlled. Δm_{i2} is the deviation in modulation index m_{i2} of series converter 2 in line 2. By controlling m_{i2} , the magnitude of series injected voltage in line 2 can be controlled. $\Delta \alpha_1$ is the deviation in phase angle of the injected voltage V_{se1} . $\Delta \alpha_2$ is the deviation in phase angle of the injected voltage V_{se2} . The nominal loading condition and system parameters are given in **Appendix A**.

3. Interline Power Flow Controller

Interline Power Flow Controller (IPFC) is VSC based FACTS controller, consists of two voltage-sourced converters (VSCs) inserted in series with transmission lines, whose DC capacitors are linked such that active power can be transferred between the two VSCs. Each VSC provides series compensation for the selected transmission line and is capable of exchanging reactive power with its own transmission system. Basic function is to control power flow among transmission lines and damping of oscillations. A non-linear dynamic model of the system is derived by omitting the resistances of all the components of the system and the transients of the transmission lines and transformers of the IPFC.

$$\dot{\delta} = \omega_0 (\omega - 1) \quad (1)$$

$$\dot{\omega} = \frac{P_m - P_e - P_D}{M} \quad (2)$$

$$\dot{E}_q^1 = \frac{-E_q + E_{fd}}{T_{do}^1} \quad (3)$$

$$\dot{E}_{fd} = \frac{-E_{fd} + K_a (V_{ref} - V_t)}{T_a} \quad (4)$$

$$\dot{V}_{dc} = \frac{3m_{i1}}{4C_{dc}} (\cos \alpha_1 I_{1d} + \sin \alpha_1 I_{1q}) + \frac{3m_{i2}}{4C_{dc}} (\cos \alpha_2 I_{2d} + \sin \alpha_2 I_{2q}) \quad (5)$$

$$V_{se1d} = -x_{t1} I_{1q} + \frac{V_{dc}}{2} m_{i1} \cos \alpha_1 \quad (6)$$

$$V_{se1q} = -x_{t1} I_{1d} + \frac{V_{dc}}{2} m_{i1} \sin \alpha_1 \quad (7)$$

$$V_{se2d} = -x_{t2} I_{2q} + \frac{V_{dc}}{2} m_{i2} \cos \alpha_2 \quad (8)$$

$$V_{se2q} = -x_{t2} I_{2d} + \frac{V_{dc}}{2} m_{i2} \sin \alpha_2 \quad (9)$$

$$V_{sei} = V_{seid} + jV_{seiq} = V_{seie}^{j\alpha_1} \quad (10)$$

A linear dynamic model of IPFC is obtained by linearizing at operating point [14].

$$\Delta\dot{\omega} = \frac{(\Delta P_m - \Delta P_e - D\Delta\omega)}{M} \quad (11)$$

$$\Delta\dot{\delta} = \omega_0\Delta\omega \quad (12)$$

$$\Delta\dot{E}_q^1 = \frac{(-\Delta E_q + \Delta E_{fd})}{T_{do}^1} \quad (13)$$

$$\Delta\dot{E}_{fd} = \frac{-\Delta E_{fd} + K_a(\Delta V_{ref} - \Delta V_t)}{T_a} \quad (14)$$

$$\Delta\dot{V}_{dc} = K_7\Delta\delta + K_8\Delta E_q^1 - K_9\Delta V_{dc} + K_{cmi1}\Delta m_{i1} + K_{ca1}\Delta\alpha_1 + K_{cmi2}\Delta m_{i2} + K_{ca2}\Delta\alpha_2 \quad (15)$$

where,

$$\Delta P_e = K_1\Delta\delta + K_2\Delta E_q^1 + K_{pv}\Delta V_{dc} + K_{pmi1}\Delta m_{i1} + K_{pa1}\Delta\alpha_1 + K_{pmi2}\Delta m_{i2} + K_{pa2}\Delta\alpha_2 \quad (16)$$

$$\Delta E_q = K_4\Delta\delta + K_3\Delta E_q^1 + K_{qmi1}\Delta m_{i1} + K_{qa1}\Delta\alpha_1 + K_{qmi2}\Delta m_{i2} + K_{qa2}\Delta\alpha_2 + K_{qv}\Delta V_{dc} \quad (17)$$

$$\Delta V_t = K_5\Delta\delta + K_6\Delta E_q^1 + K_{vv}\Delta V_{dc} + K_{vmi1}\Delta m_{i1} + K_{va1}\Delta\alpha_1 + K_{vmi2}\Delta m_{i2} + K_{va2}\Delta\alpha_2 \quad (18)$$

Figure 2 shows the modified Phillips-Heffron model of the SMIB system with IPFC installed [4]. The constants of the modified Phillips-Heffron model are functions of the value of system parameters and the initial operating condition as shown in **Appendix A**. In terms of state-space representation, the power system can be modeled as

$$\dot{X} = AX + BU \quad (19)$$

$$x = [\Delta\delta \quad \Delta\omega \quad \Delta E_q^1 \quad \Delta E_{fd} \quad \Delta V_{dc}]^T \quad (20)$$

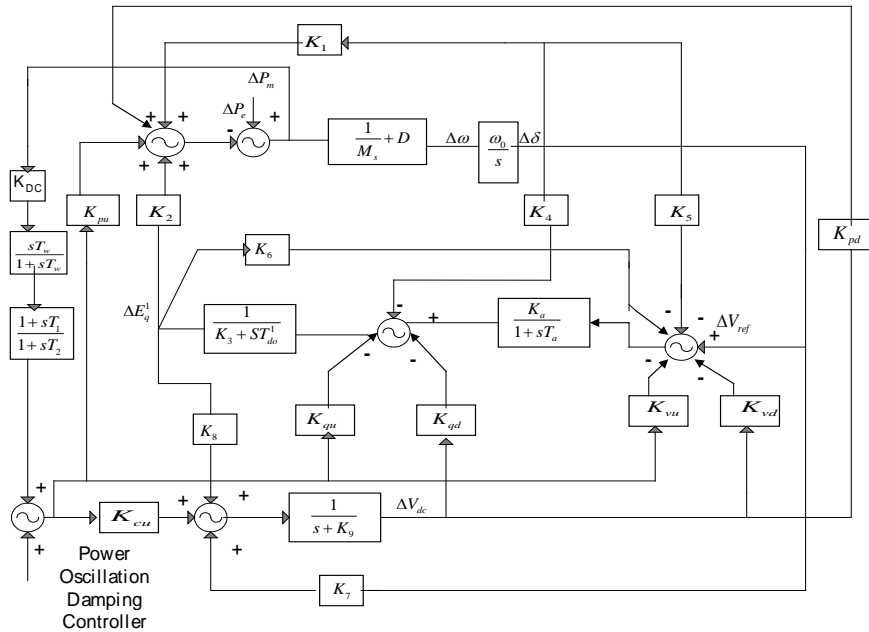


Figure 2. Phillips Heffron Model of IPFC.

$$u = [\Delta m_{i1} \quad \Delta m_{i2} \quad \Delta \alpha_1 \quad \Delta \alpha_2] \quad (21)$$

$$A = \begin{bmatrix} 0 & \omega_0 & 0 & 0 & 0 \\ -\frac{K_1}{M} & \frac{-D}{M} & -\frac{K_2}{M} & 0 & \frac{-K_{pv}}{M} \\ -\frac{K_4}{T_{do}^1} & 0 & -\frac{K_3}{T_{do}^1} & \frac{1}{T_{do}^1} & \frac{-K_{qv}}{T_{do}^1} \\ -\frac{K_a K_5}{T_a} & 0 & -\frac{K_a K_6}{T_a} & \frac{1}{T_a} & \frac{-K_a K_{vv}}{T_a} \\ K_7 & 0 & K_8 & 0 & -K_9 \end{bmatrix} \quad (22)$$

$$B = \begin{bmatrix} 0 & 0 & 0 & 0 \\ -\frac{K_{pmi1}}{M} & -\frac{K_{p\alpha1}}{M} & -\frac{K_{pmi2}}{M} & -\frac{K_{p\alpha2}}{M} \\ -\frac{K_{qmi1}}{M} & -\frac{K_{q\alpha1}}{M} & -\frac{K_{qmi2}}{M} & -\frac{K_{q\alpha2}}{M} \\ -\frac{K_a K_{vmi1}}{T_a} & -\frac{K_a K_{v\alpha1}}{T_a} & -\frac{K_a K_{vmi2}}{T_a} & -\frac{K_a K_{v\alpha2}}{T_a} \\ K_{cmi1} & K_{c\alpha1} & K_{cmi2} & K_{c\alpha2} \end{bmatrix} \quad (23)$$

4. Proportional Integral (PI) Based IPFC

In this section, PI Based IPFC [20] is suggested for damping of oscillations. The PI constants K_p and K_i are chosen by trial and error method. In **Figure 3**, additional damping signal Power Oscillation Damping Controller [POD] can be applied for improvement in PI controller performance. The POD controller [21] may be considered as comprising gain K_{DC} , wash out block and lag-lead compensator. The values of parameters of the lead-lag compensator are chosen so as to obtain best damping performance. Optimum parameters for the damping controllers are given in **Appendix A**. The IPFC controllable signals (m_{i1} , α_1 , m_{i2} and α_2) can be modulated in order to produce a damping torque. Controllability indices for the different Interline Power Flow Controller controllable parameters are given in **Appendix A**. The washout circuit as shown in **Figure 3** is provided to eliminate steady-state bias in the output of POD Controller. The $T\omega$ must be chosen in the range of 10 to 20.

5. Fuzzy Logic Based IPFC

Drawback of PI controller is the frequency deviation. It causes deterioration in performance during varying system conditions. Hence Fuzzy logic can be blended with conventional control techniques. Fuzzy logic is the art which makes machines more intelligent enabling them to reason in a fuzzy manner like humans. The mathematical concepts behind fuzzy reasoning are very simple. Hence fuzzy logic IPFC controller is proposed. Fuzzy logic is an innovative area of research as it does a good job of trading off between significance and precision. The main concept of fuzzy logic control (FLC) is to build a model of a human expert capable of controlling the plant without thinking in terms of a mathematical model. **Figure 4** shows Fuzzy Logic Controller (FLC) in which the electrical power at IPFC location is feedback to the coordination of control signals are the inputs to the fuzzy

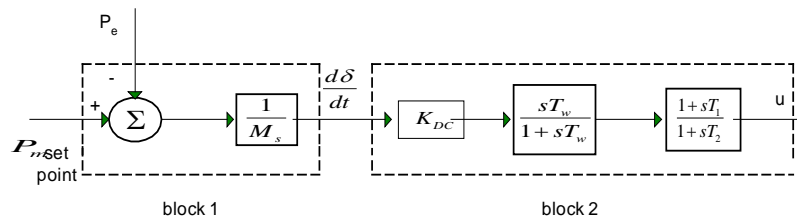


Figure 3. Structure of power oscillation damping [POD] controller.

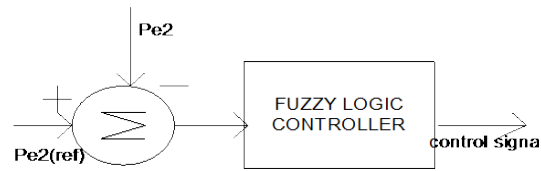


Figure 4. Structure of fuzzy logic controller.

logic controller. The control strategy has been prepared based on rules. The fuzzy logic approach more accurately represents the operational constraints of power systems and fuzzified constraints are softer than conventional constraints. Fuzzy logic based IPFC controller consists of three major parts. (a) Fuzzification; (b) Inference; (c) Defuzzification units.

5.1. Fuzzification

In fuzzification the input and output are decomposed into one or more fuzzy sets. Here, the input variables are mapped onto fuzzy linguistic variables. The choice of membership functions influences the quality of a fuzzy logic controller. Membership function defined on the universe of discourse is the space where the fuzzy variables are defined. The membership functions designs the elements of the universe onto numerical values in the interval $[0, 1]$. Each fuzzified variable has certain membership function. The input (P_e) is fuzzified using three fuzzy sets: high, good and low. Many types of curves can be used, Out of all the curves available, triangular or trapezoidal shaped membership functions are the most popular. These shapes are easier to represent in embedded controllers. The shape of membership function is chosen by trial and error approach so that best performance of the fuzzy controller can be achieved. However, the shape of the membership function can vary the small deviations in output of fuzzy logic controller [22] [23]. The output membership function is fuzzified using three fuzzy sets: big, medium, small. Plot of membership function for input and output variable are as shown in Figure 5 and Figure 6 respectively.

The parameters of the membership function of the fuzzy logic controller, consisting of P_e as control input signal, u is the fuzzy controlled output for IPFC control signal m_{i1} in Table 1. Robust performance of fuzzy logic controller can be achievable for wider range of input and output signals. The range chosen for input signal P_e is 0 to 7.5. Under the transient conditions, large variation in the system parameters can take place and therefore large ranges are chosen for input output mapping [22]. However, for other smaller ranges of input and output fuzzy performance will not deviate.

5.2. Inference

A relation between cause and effect, or a condition and a consequence is done by reasoning. For reasoning, logical inference is used, in order to draw a conclusion. The mechanism of the inference process is the search of input/output relationship to match the input conditions. The objective of control is to influence the behavior of a system by changing an input of that system according to a rule that model how the system operates. Therefore, an integral part of the inference process is the rule-base (a list of rules that relate the input values to the output values). Control decisions [24] are made on the basis of fuzzified linguistic variables. We usually follow rules of inference as shown in Table 2. The rules can be specified to include various operating conditions. In fuzzy logic control, in order to minimize the complexity of the controller, it is always desirable that number of rules in a working controller should be less which makes shorter controller execution time. Hence while designing FLC more stress has been given on effective input variable and minimum rule. FLC has one rule for one input variable. The min-max inference is applied to determine the degree of membership for the output variable. The main objective of the designed fuzzy inference system is for the improvement in damping of power system oscillations.

5.3. Defuzzification

After the process of fuzzy reasoning, linguistic output variable should be translated into a crisp value. Defuzzification is such inverse transformation which designs the output from the fuzzy domain back into the crisp domain. For IPFC control, the fuzzy inference system coordinates the linguistic input variables. The universe of

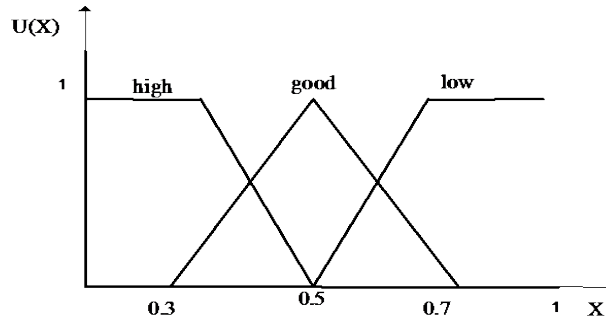


Figure 5. For input variable.

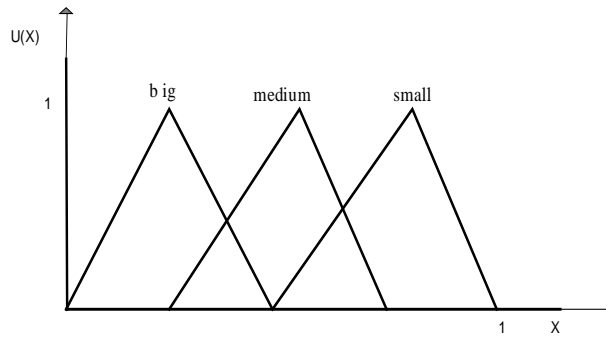


Figure 6. For output variable.

Table 1. Parameters of membership function for control signal m_{i1} .

Variables	MF's	α_a	α_b	α_c	α_d
Inputs	High	-10	-5	-4	-0.05
P_e	good	-1.945	0	1.97	-
	low	-0.005	4	5	7.5
	big	-2	-1.02	-	-
Output u	Medium	-1	-0.0582	0.926	-
	Small	0.0159	1	2.01	-

Table 2. Table for Input-output mapping.

S.N.	Instruction
1.	If input is low, then output is medium
2.	If input is high, then output is big
3.	If input is good, then output is small

discourse of the input variables decides the required scaling for correct per-unit operation. The fuzzy logic operations performed (Sup-Min inference) are decided by the decision making logic, and together with the knowledge base influences the outputs of each fuzzy IF-THEN rules. Those are combined and converted to crisp values with the defuzzification block. The fuzzy Controller uses the centroid method. The general function of the fuzzy Logic controller can be expressed as:

$$u(t) = f \left\{ \alpha \left(\frac{P_e}{s} \right) \cdot \beta \left(\frac{\Delta P_e}{s} \right) \right\} \tag{24}$$

where, f denotes the mapping defined by the rule base and α, β is the appropriate scaling, which depends on the scale of the X-axis and Y-axis of input and output variables. The fuzzy output is given by equation:

$$u = \frac{\sum_{i=1}^1 \mu c(u_i) * u_i}{\sum_{i=1}^1 \mu c(u_i)} \quad (25)$$

6. Simulation Results

Digital Simulation has been carried out with Modified Phillips Heffron model in MATLAB environment. Independent damping signals and Fuzzy with IPFC has been demonstrated. In small signal analysis, the simulation result of the linearized model with four different input control signals under 10% of variation in mechanical power input is considered. The proposed PI and Fuzzy controllers performances are tested in Single Machine Infinite Bus system.

6.1. Dynamic Performance of the System with Control Signal m_{i1}

Figure 7 depicts the comparative analysis of PI based IPFC, IPFC with POD as additional damping controller and fuzzy based IPFC. Simulation result depicts the performance of IPFC with POD as additional damping controller for control signal m_{i1} , first peak of speed deviation is reduced from 0.018 rad/sec. to 0.014 rad/sec. and settling time is reduced upto 0.43 sec. However, Fuzzy based IPFC reduces first swing from 0.018 rad/sec to 0.012 rad/sec with settling time 0.4 sec. Hence fuzzy based IPFC with damping controller m_{i1} shows robust performance.

The eigen values as shown in **Table 3** lying on negative half of the s-plane which indicates the stable system.

6.2. Dynamic Performance of the System with Control Signal m_{i2}

Figure 8 demonstrates the satisfied performance of PI based IPFC, IPFC with POD as additional damping controller and fuzzy based IPFC for control signal m_{i2} . Result indicates that fuzzy based IPFC reduces first peak of speed deviation from 0.025 to 0.01 rad/sec with settling time 0.25 sec. and improvement in steady state error. Also, system is more amenable with Fuzzy which suppress the oscillations well and hence gives the best result. Hence Fuzzy logic based IPFC significantly improves small signal stability of Single Machine Infinite Bus system.

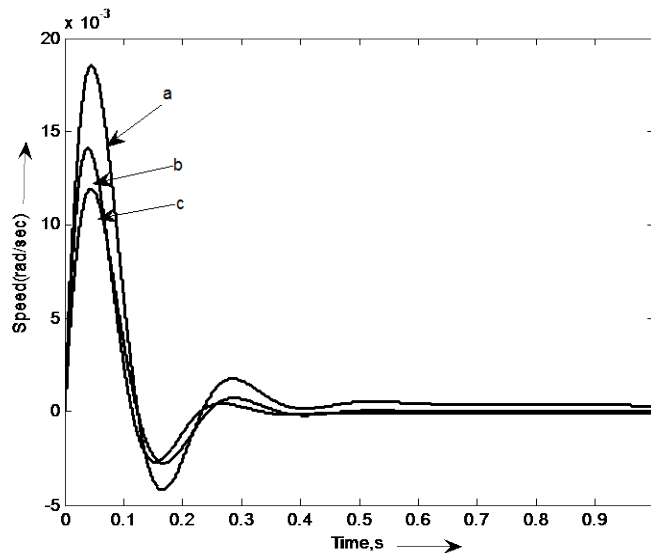


Figure 7. Speed deviation response of linearized SMIB system for control signal m_{i1} . a. Control signal m_{i1} ; b. Control signal m_{i1} with POD; c. Control signal m_{i1} with Fuzzy Logic Controller.

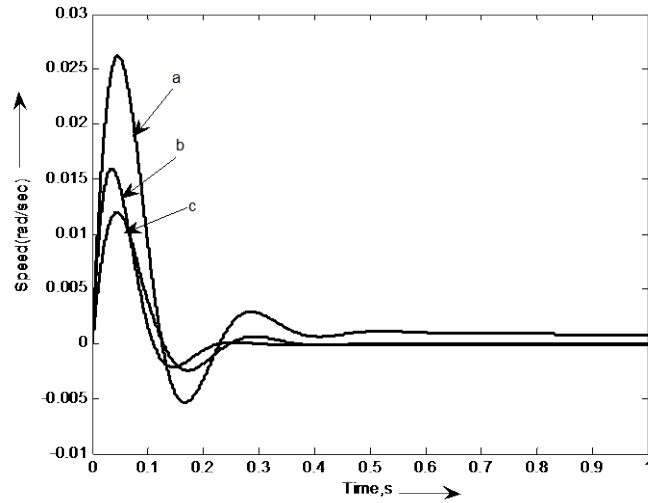


Figure 8. Speed deviation response of linearized SMIB system for control signal m_{i2} . a. Control signal m_{i2} ; b. Control signal m_{i2} with POD; c. Control signal m_{i2} with Fuzzy Logic Controller.

Table 3. Comparison with POD controller and fuzzy logic controller for control signal m_{i1} .

Control Signal m_{i1}	With POD	With Fuzzy
$-11.1052 \pm 26.1203i$	$-14.6918 \pm 27.3709i$	$-0.7128 \pm 3.7544i$
0.0000	-19.4661	$-11.1907 \pm 26.1568i$
-0.0022	$-0.7128 \pm 3.7544i$	-0.0047
$-0.7128 \pm 3.7544i$	-0.0721	
	-0.0025	

Time domain result has been verified by obtaining eigen value analysis of PI based IPFC, IPFC with POD as additional damping controller and Fuzzy based IPFC for control signal m_{i2} as shown in **Table 4** in which the negative real part of eigen values proves that the system is stable.

6.3. Dynamic Performance of the System with Control Signal α_1

The MATLAB result as shown in **Figure 9** demonstrates the satisfactory performance of PI based IPFC, IPFC with POD as additional damping controller and Fuzzy based IPFC for control signal α_1 . Result indicates with fuzzy based IPFC, first peak of speed deviation is reduced from 0.017 to 0.012 rad/sec, settling time is reduced. Also, system is more suitable with Fuzzy based controller which suppress the oscillations well and hence give the best result.

Time domain result has been verified by obtaining eigen value analysis which are tabulated in **Table 5** in which all the eigen values regarding PI based IPFC, IPFC with POD as additional damping controller and fuzzy based IPFC for control signal α_1 respectively lies on negative part of real axis which ensures that the system is stable.

6.4. Dynamic Performance of the System with Control Signal α_2

With coordinated action of IPFC and POD as additional damping controller, reduction in peak amplitude, settling time and steady error are delineated in **Figure 10**. However, fuzzy based IPFC shows the improvement in the response of the system for control signal α_2 in which first peak of speed deviation is reduced from 0.016 to 0.013 rad/sec with settling time 0.4 sec. This again highlights the efficacy of the fuzzy based IPFC.

This inference has been checked by obtaining eigen value analysis of PI based IPFC, IPFC with POD as additional damping controller and Fuzzy based IPFC for control signal α_2 as shown in **Table 6**. The negative real part of eigen value indicates that the system is stable.

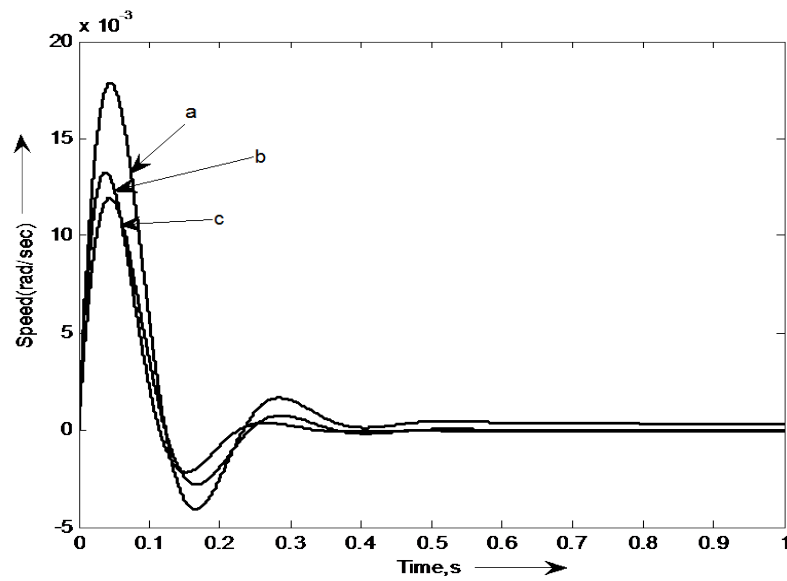


Figure 9. Speed deviation response of linearized SMIB system for control signal α_1 . a. Control signal α_1 ; b. Control signal α_1 with POD; c. Control signal α_1 with Fuzzy Logic Controller.

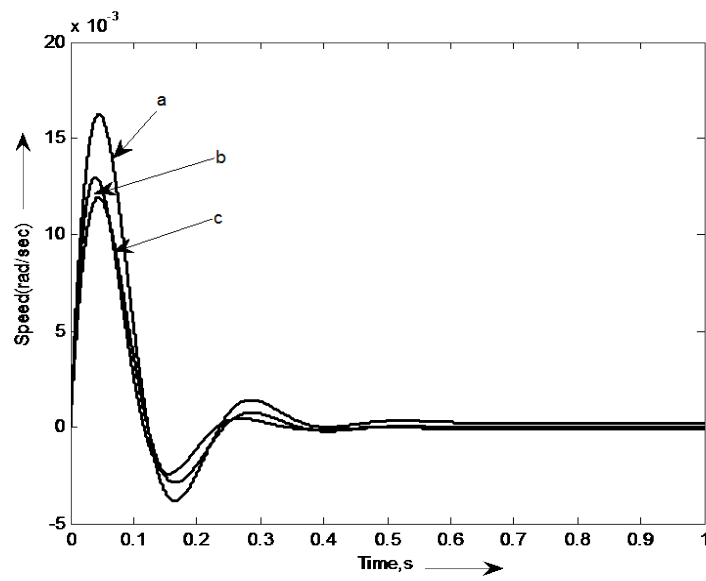


Figure 10. Speed deviation response of linearized SMIB system for control signal α_2 . a. Control signal α_2 ; b. Control signal α_2 with POD; c. Control signal α_2 with Fuzzy Logic Controller.

Table 4. Comparison with POD controller and fuzzy logic controller for control signal m_{i2} .

Control Signal m_{i2}	With POD	With Fuzzy
$-11.0063 \pm 26.0774i$	$-18.6719 \pm 28.1777i$	$-0.7128 \pm 3.7544i$
0.0000	-19.4655	$-11.1907 \pm 26.1568i$
-0.0022	$-0.7128 \pm 3.7544i$	-0.0047
$-0.7128 \pm 3.7544i$	-0.0605	
	-0.0025	

Table 5. Comparison with POD controller and fuzzy logic controller for control signal α_1 .

Control Signal α_1	With POD	With Fuzzy
$-11.1140 \pm 26.1241i$	$-15.6530 \pm 27.4281i$	$-0.7128 \pm 3.7544i$
0.0000	-4.5630	$-11.1907 \pm 26.1568i$
-0.0022	$-0.7128 \pm 3.7544i$	-0.0047
$-0.7128 \pm 3.7544i$	-0.0727	
	-0.0026	

Table 6. Comparison with POD controller and fuzzy logic controller for control signal α_2 .

Control Signal α_2	With POD	With Fuzzy
$-11.1351 \pm 26.1331i$	$-14.4546 \pm 27.1546i$	$-0.7128 \pm 3.7544i$
0.0000	-4.618	$-11.1907 \pm 26.1568i$
-0.0022	$-0.7128 \pm 3.7544i$	-0.0047
$-0.7128 \pm 3.7544i$	-0.0767	
	-0.0025	

The comparative performance of **Figures 7-10** justified that fuzzy based IPFC with pulse width modulation index of voltage series converter 1 and 2 (m_{i1} and m_{i2}) are more effective in damping of power system oscillations. This inference has been checked by obtaining eigen value analysis which indicates that the system is stable.

7. Conclusion

In this paper, a systematic approach for determining relative effectiveness of Interline Power Flow Controller (IPFC) control signals (m_{i1} , α_1 , m_{i2} , α_2) in damping low frequency oscillations has been presented. The linearized power system model of Single Machine Infinite Bus system for analyzing the performance of fuzzy based IPFC for variation in system parameters has been studied. These control signals show the significant improvement in damping of power system performance. Investigations have revealed that IPFC control signals m_{i1} and m_{i2} provide robust performance over other signals. The proposed Fuzzy Logic Controller performance is comparatively better than PI based controller. The fuzzy rules have been designed to minimize transients swing, improvement in damping of oscillations. The controllers in comparative performance in terms of small signal stability improvement and damping of oscillations are demonstrated. The fuzzy logic controller demonstrates the robust performance and is easy to coordinate with damping schemes. The simplicity of the design is the most attractive feature of fuzzy based control scheme. The proposed controller fulfills the main objective of this paper. Time domain analysis and eigen value analysis results validate the performance of various IPFC control strategy.

References

- [1] Thakre, M.P., Kale, V.S., Dhenuvakonda, K.R., Umre, B.S. and Junghare, A.S. (2015) Study and Mitigation of Sub-synchronous Oscillations with SSC Based SSSC. *Journal of Power and Energy Engineering*, **3**, 33-43.
- [2] Kundur, P. (1994) *Power System Stability and Control*. Mc Graw-Hill, New York, 12.
- [3] Hingorami, N.G. and Gyugyi, L. (2001) *Understanding FACTS: Concepts and Technology of Flexible AC Transmission System*. IEEE Power Engineering Society, IEEE Press, Delhi.
- [4] Song and Johns, A.T. (1999) *Flexible AC Transmission Systems*. IEE Power and Energy Series 30, London.
- [5] Parimi, A.M., Elamvazuthi, I. and Saad, N. (2010) Fuzzy Logic Control for IPFC for Damping Low Frequency Oscillations. *Intelligent and Advanced Systems (ICIAS): International Conference*, 1-5.
- [6] Babu, A.V.N. and Sivanagaraju, S. (2010) Mathematical Modeling, Analysis and Effects of Interline Power Flow Controller (IPFC) Parameters in Power Flow Studies. *India International Conference on Power Electronics (IICPE)*, 1-7.
- [7] Parimi, A.M., Sahoo, N.C., Elamvazuthi, I. and Saad, N. (2011) Transient Stability Enhancement and Power Flow

- Control in a Multi-Machine Power System Using Interline Power Flow Controller. *International Conference on Energy, Automation, and Signal (ICEAS)*, 1-6.
- [8] Ramachandran, G.V. and Kumar, C.V. (2010) Simulation and State Estimation of Power System with Interline Power flow Controller. *45th International Universities Power Engineering Conference (UPEC)*, 1-6.
- [9] Moghadam, M.F., Gharehpetian, G.B. and Askarian Abyaneh, H.(2010) Optimized Regulation of DC Voltage in Interline Power Flow Controller (IPFC) Using Genetic Algorithm. *Power Engineering and Optimization Conference (PEOCO)*, 117-121.
- [10] Karimi, K. (2006) The Effect Interline Power Flow Controller (IPFC) on Damping Inter-Area Oscillations in the Interconnected Power Systems. *IEEE International Symposium on Industrial Electronics*, 3, 1911-1915.
- [11] Yuan, Z.H., de Haan, S.W.H. and Braham, F. (2008) A New Concept of Exchanging Active Power without Common DC Link for Interline Power Flow Controller (S-IPFC), Power and Energy Society General Meeting—Conversion and Delivery of Electrical Energy in the 21st Century. *IEEE Conference*, 1-7.
- [12] Parimi, A.M., Elamvazuthi, I. and Saad, N. (2008) Interline Power Flow Controller (IPFC) Based Damping Controllers for Damping Low Frequency Oscillations in a Power System. *ICSET. IEEE International Conference on Sustainable Energy Technologies*, 334-339.
- [13] Jiang, X., Fang, X.H., Chow, J.H., Edris, A. and Uzunovic, E. (2007) Regulation and Damping Control Design for Interline Power Flow Controllers. *Power Engineering Society General Meeting*, 1-8.
- [14] Banaei, M.R. and Kami, A. (2009) Interline Power Flow Controller Based Damping Controllers for Damping Low Frequency Oscillations. *INTELEC 2009, 31st International Conference on Telecommunications Energy Conference*, 1-6.
- [15] Veeramalla, J. and Sreerama Kumar, R. (2010) Application of Interline Power Flow Controller (IPFC) for Damping Low Frequency Oscillations in Power Systems. *Proceedings of the International Symposium on Modern Electric Power Systems (MEPS)*, 1-6.
- [16] Segundo, F.R. and Messina, A.R.(2009) Modeling and Simulation of Interline Power Flow Controllers: Application to Enhance System Damping. *North American Power Symposium (NAPS)*, 1-6.
- [17] Jiang, X., Fang, X.H., Chow, J.H., Edris, A., Uzunovic, E., Parisi, M. and Hopkins, L. (2008) A Novel Approach for Modeling Voltage-Sourced Converter-Based FACTS Controllers. *Power Delivery, IEEE Transactions*, 23, 2591-2598.
- [18] Jiang, S., Gole, A.M., Annakkage, U.D. and Jacobson, D.A. (2011) Damping Performance Analysis of IPFC and UPFC Controllers Using Validated Small-Signal Models. *IEEE Transactions on Power Delivery*, 26, 446-454.
- [19] Gopinath, B., Suresh Kumar, S. and Ramya, M. (2013) Circuits, Power an Genetically Optimized IPFC for Improving Transient Stability Performance in Power System. *International Conference on Computing Technologies (ICCPCT)*, 120-125.
- [20] Dhurvey, S.N. and Chandrakar, V.K. (2011) Performance Evaluation of IPFC by Using Fuzzy Logic Based Controller, *IEEE 4th International Conference on Emerging Trends in Engineering & Technology, ICETET 2011, Mauritius*, 16-18 November 2011, 168-173.
- [21] Dhurvey, S.N. and Chandrakar, V.K. (2008) Performance Comparison of UPFC in Coordination with Optimized POD and PSS on Damping of Power System Oscillations. *International Journal of WSEAS Transaction on Power System*, 3, 287-299.
- [22] Chandrakar, V.K. and Kothari, A.G. (2006) Fuzzy-Based Static Synchronous Compensator (STATCOM) for Improving Transient Stability Performance. *International Journal Energy Technology and Policy*, 5, 692-707.
- [23] Chandrakar, V.K. and Kothari, A.G. (2007) Comparison of RBFN and Fuzzy Based STATCOM Controllers for Transient Stability Improvement. *IEEE Aegean Conference on Electric Machines Powers and Electromotion*, Bodrum, 10-12 September 2007.
- [24] Chandrakar, V.K. and Kothari, A.G. (2006) Improvement of Transient Stability Using Fuzzy Logic Based Unified Power Flow Controller [UPFC]. *International Journal Power and Energy Systems*, 5, 1-18.

Appendix A

A.1. Generator

$$M = 2H = 0.1787, T_{do}^1 = 5.044, V_b = 1 \text{ p.u}$$

A.2. Excitation System

$$K_a = 50.0, T_a = 0.05$$

A.3. Constants

$$K_1 = 0.3837, K_2 = -0.1717, K_3 = 3.6667, K_4 = -0.7350, K_5 = -0.0237, K_6 = 1.0659, K_7 = -0.0139, K_8 = -0.6890, K_9 = 0.0023$$

A.4. Interline Power Flow Controller Parameters

$$\begin{aligned} K_{pa1} &= 0.0376, K_{qa1} = 0.0010, K_{va1} = -0.0029, K_{ca1} = 0.0672 \\ K_{pa2} &= -0.0045, K_{qa2} = 0.0033, K_{va2} = -0.0021, K_{ca2} = -0.01116 \\ K_{pmi1} &= 0.0552, K_{qmi1} = -0.0326, K_{vmi1} = -0.0360, K_{cmi1} = -0.000766 \\ K_{pmi2} &= 0.2530, K_{qmi2} = 0.0056, K_{vmi2} = -0.0038, K_{cmi2} = -0.0087, K_{pp} = 1, K_{pi} = 0.5 \end{aligned}$$